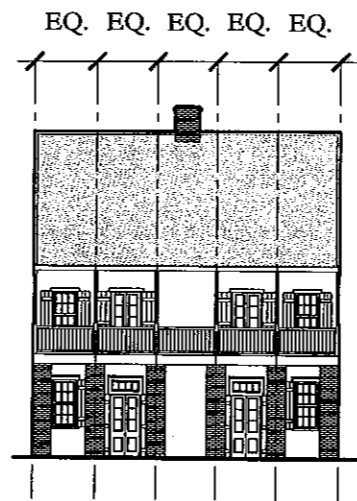
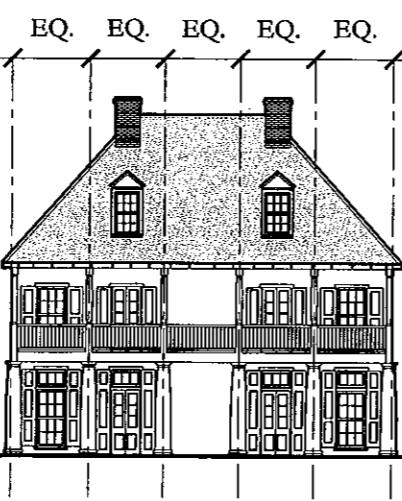
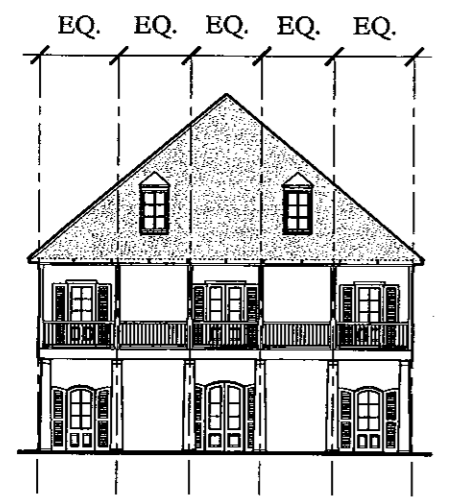
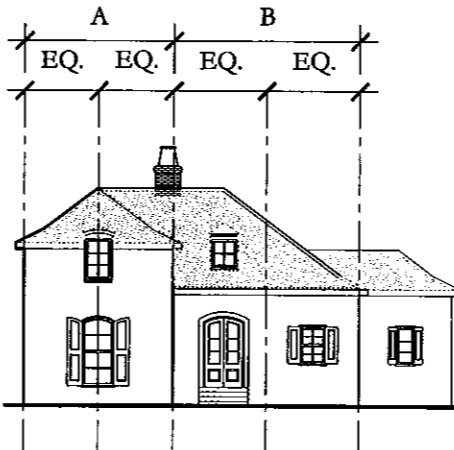
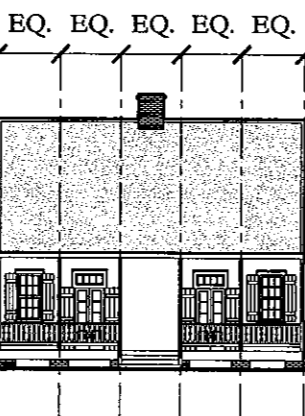
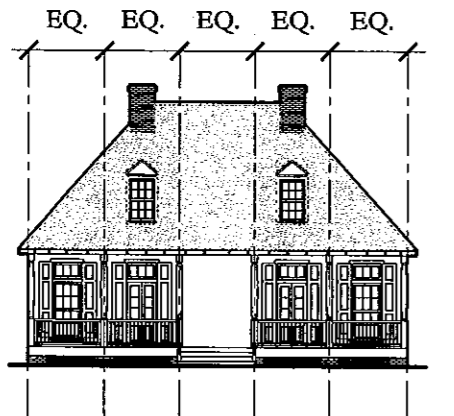
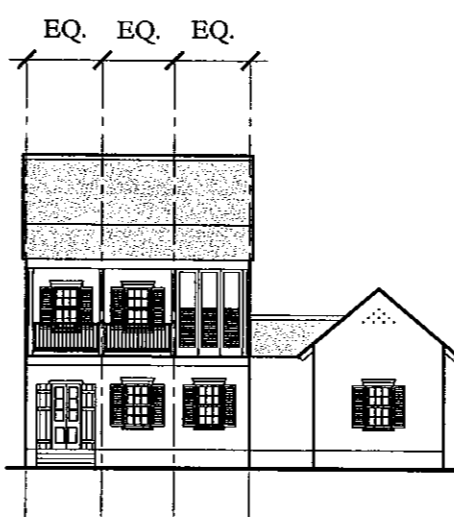
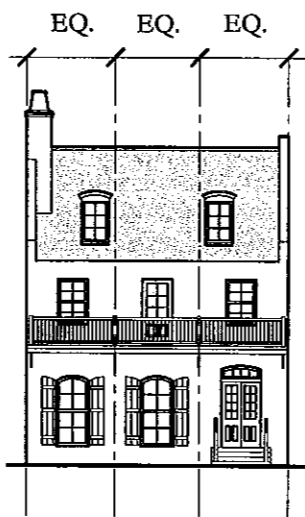
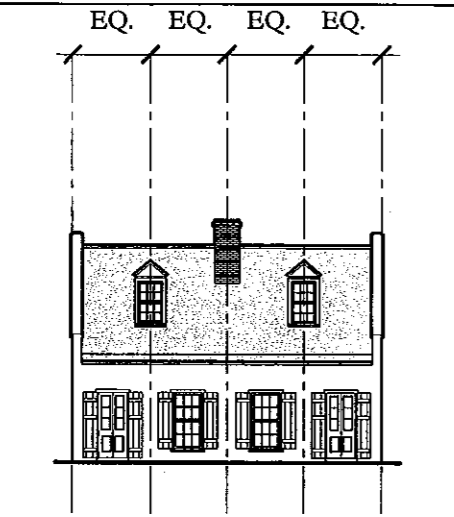


# Elevations



THESE DIAGRAMS ILLUSTRATE A RANGE OF POSSIBILITIES FOR HOUSE DESIGNS USING THE ACADIA PLANTATION DESIGN CODE.

## BASIC MASSING

THE BASIC MODULE FOR A FRENCH HOUSE IS A SIMPLE, RECTANGULAR VOLUME, EITHER ONE, TWO OR TWO AND A HALF STORIES IN HEIGHT. TYPICALLY THE BODY OF THE HOUSE HAS A RAISED FOUNDATION AND THE FRONT FACADE IS PARALLEL TO THE STREET. THE ROOF CAN BE EITHER GABLED OR HIPPED. A PORCH IS AN INTEGRAL ELEMENT TO THE MAIN BODY OF THE HOUSE, TYPICALLY RUNNING THE ENTIRE LENGTH OF THE HOUSE AND CAN WRAP ONE OR MORE SIDES OF THE HOUSE. THE PORCH BAYS ARE SYMMETRICAL DIVIDED AND USUALLY HAVE A DEPTH OF 8-10 FEET.

NARROW WIDTH SIDE AND REAR WINGS WITH SIMILAR PROPORTIONS ARE USED TO INCREASE THE VOLUME. THESE WINGS HAVE SIMPLE MASSING AND REMAIN SECONDARY TO THE MAIN BODY. TYPICAL ROOF PITCHES ARE 8:12 TO 10:12 FOR GABLES OR HIPS.

THE MINIMUM FLOOR TO CEILING HEIGHT REQUIREMENTS CAN BE FOUND IN THE URBAN REGULATION INSTRUCTIONS.

